



TRAFFIC IMPACT ASSESSMENT

To: Philipstown Planning Board

From: John Canning, P.E.
Veronica Prezioso, Analyst

Date: July 28, 2020

Subject: Traffic Impact Assessment Letter
Proposed CRS Warehouse Development
2761 US 9
Cold Spring, NY

Kimley-Horn has prepared this Traffic Impact Assessment to document the evaluation that has been conducted to ensure that the proposed 18,000-sf warehouse facility (the "Project") is suitably located and that it will operate safely and efficiently. The Project is located at 2761 US 9 in the Town of Philipstown, New York, in Putnam County.

Project Description

The site currently consists of old rock monuments surrounding its perimeter, with no existing building on-site. It is located along the west side of US 9, roughly 0.32 miles south of the signalized intersection of US 9 with New York State Route 301. US 9 at the location of the site driveway is relatively straight and level (As shown on Sheet 5 of 5, prepared by Badey & Watson, last revised 7/3/20, there is a slight curve with a radius of approximately 2,250 feet to the north of the driveway and another slight curve with a radius of approximately 1,350 feet to the south of the driveway, while the road slopes up toward the driveway at a rate of approximately 1.8% for the last 300 feet from the south and at a rate of approximately 0.9% for the last 300 feet approaching from the south).

The proposed development of the CRS Warehouse is to consist of 20,340 sf wholesale warehouse space, including some administrative office space. The driveway will remain in roughly the same location and has been reviewed by New York State Department of Transportation (NYSDOT).

Suitability of US Route 9 to Support Warehouse Development

US 9 is a north-south oriented state highway that stretched from Canada to Delaware and, in New York, runs down the eastern edge of the state. It is classified by NYSDOT as a principal arterial roadway, as

well as an access highway¹. Not all state highways are designated as access highways and, as seen on the attached documentation, NYSDOT has specifically designated US 9 as a roadway suitable for the use of 53' tractor trailers.

Within the study area, US 9 is named Albany Post Road and provides one travel lane per direction of 12 to 13 feet in width. US 9 has a posted speed limit of 50 miles per hour (mph) and the pavement is in good condition. No street parking, crosswalks or sidewalks are provided in the area. The proposed driveway is located approximately 1,800 feet south of the nearest signalized intersection, so operations at the driveway are well out of the sphere of influence of that intersection.

Relative Increase in Highway Traffic

Project traffic was determined from the Trip Generation Manual, Tenth Edition, published by the Institute of Transportation Engineers (ITE). This widely-utilized reference source contains trip generation rates for the subject use: "Warehousing" (Land Use Code 150, see attachments).

Project-generated trips for a warehouse with 30 employees were determined for the weekday AM and PM peak hours and are shown in **Tables 1 and 2** below, respectively. The Project's peak-hour trips were compared to the existing peak-hour traffic activity on US Route 9, which was obtained from NYSDOT Average Annual Daily Traffic (AADT) volumes collected by a counter located 0.98 miles South of the Project. Since these volumes were from April 2011, they were increased by 1.5% per year (a total of 13.5%) to account for growth to 2020.

Table 1 – Trip Generation Summary, AM Peak Hour

7:00-8:00 AM			
	Cars & Buses	Single-unit Trucks	Tractor Trailers
Existing Trips	1094	59	23
Project Trips	19	1	1
Net Trips	1113	60	24

Table 2 – Trip Generation Summary, PM Peak Hour

4:00-5:00 PM			
	Cars & Buses	Single-unit Trucks	Tractor Trailers
Existing Trips	1251	67	27
Project Trips	18	1	1
Net Trips	1269	68	28

¹ Refer to the attachments for further information from NYSDOT's *Official Description of Designated Qualifying and Access Highways in New York State*.

Truck trip percentages were obtained for US Route 9 from a NYSDOT AADT count just north of NYS 301, while the truck percentages for the Project (Single-unit Trucks and Tractor-Trailers) were obtained from surveys conducted by Kimley-Horn of a distribution warehouse next to I-84 in Orange County. The truck percentages were applied to the total AADT for US Route 9 and the total site trips to yield the existing and projected truck trips.

As shown in Table 1, the Project would be expected to generate 19 passenger vehicle trips, 1 single-unit truck trip, and 1 tractor trailer trip during the weekday AM peak hour on US 9. Compared to the existing trips, the net increase in overall trips is 1.8% (0.9% if there is a 50/50 split of traffic headed north and south on US 9) and there is only a nominal increase in truck traffic.

As shown in Table 2 above, the Project would be expected to generate 18 passenger vehicle trips, 1 single-unit truck trip, and 1 tractor trailer trip during the weekday PM peak hour on US 9. Compared to the existing trips, the net increase in overall trips is 1.5% (0.75% if there is a 50/50 split of traffic headed north and south on US 9) and again there is only a nominal increase in truck traffic.

Speed Past the Site Driveway on US 9

In order to evaluate the impact of the Project on roadway conditions in the area and to calculate accurate sight distance requirements, a speed and volume study was undertaken on US 9 just north of 1st Street between Tuesday, July 28th, 2020 and Saturday, August 1st, 2020. The Average speed of traffic past the site was just 44 mph, 6 mph lower than the speed limit. For more rigorous design purposes, the 85th percentile speeds were determined to be 52 mph northbound and 49 mph southbound. Data from this study are shown in the attached.

Driveway Sight Distances

A sight distance analysis was conducted at the intersection of US 9 with the proposed site driveway to identify if adequate intersection and stopping sight distances are provided. The observations were then compared to sight distance requirements provided in the American Association of State Highway and Transportation Officials' (AASHTO) publication, *A Policy on Geometric Design of Highways and Streets, 7th Edition (2018)*.

Stopping sight distance is to allow a motorist "to stay within his or her lane and maintain steering control during the braking maneuver on wet surfaces" (AASHTO, 2018). Intersection sight distance is to "provide sufficient time for the minor-road vehicle to accelerate from a stop and complete a left-turn without unduly interfering with major road traffic operations" (AASHTO, 2018). Further, AASHTO notes that with the required intersection sight distance values shown in Table 3, vehicles traveling at the 85th percentile should not have to slow down below 35 mph if they encounter a car or single-unit truck exiting the project site (30 mph if they encounter a tractor trailer).

Table 3 – Sight Distance Analysis				
	Intersection Sight Distance Required (feet)		Intersection Sight Distance Available (feet)	
	Looking Right	Looking Left	Looking Right	Looking Left
Site Driveway	575	555	710 ¹	840 ¹
	Stopping Sight Distance Required (feet)		Stopping Sight Distance Available (feet)	
	Traveling NB	Traveling SB	Traveling NB	Traveling SB
US 9	450	425	710 ¹	840 ¹

Intersection and stopping sight distances are based on the higher of the 85th percentile speed or the posted speed limit (52 mph NB, 50 mph SB).

¹ As shown Sheet 5 of 5 prepared by Badey & Watson, last revised, 7/3/20, with the removal of vegetation as shown on the attached Vegetation Removal Plan.

According to AASHTO, the required minimum intersection sight distance for drivers exiting the site driveway is 575 feet to the right and 555 feet to the left. Field measurements conducted by Kimley-Horn indicate that existing foliage on the opposite side of US 9 hinders the view of a driver exiting the driveway and looking to the right. As shown on the attached, if this foliage is trimmed and maintained, exiting motorists will have 710 feet of sight distance available to the right. Looking to the left, Kimley-Horn’s observations revealed that a twin maple tree hinders the view of a driver exiting the driveway. If this twin tree is removed, existing motorists will have 840 feet of sight distance available to the left.

As can be seen from Table 3, stopping sight distance, which is a fundamental safety requirement, has values which are considerably lower than intersection sight distance, which is more concerned about the disruption of the flow of through traffic. Since the minimum required sight distances will be provided and because the volume of traffic generated by the site, especially the volume of truck traffic, is very modest, there will be minimal disruption to traffic flow on US Route 9 and the site will have the necessary sight distances to operate safely.

Truck Maneuvering

Truck turning analyses were conducted to ensure that the driveway on US 9 will allow vehicles and trucks to safely access and circulate throughout the site. Four templates have been prepared for a WB-67 tractor trailer, the largest-anticipated delivery vehicle, entering and exiting the site in every direction. The attached plans confirm that WB-67’s can safely access, circulate around the site and exit to US 9.

Conclusions

As demonstrated by the evidence provided in the assessment, US Route 9 is a roadway suitable for travel by WB-67 vehicles (tractors with 53' trailers) as it is so designated by the NYSDOT. The project will only increase traffic volumes on US 9 by approximately 1% in the peak hours and the level of truck activity will be nominal (one or two truck in the peak hour). The driveway has been located so that, with minimal clearing, over 700 feet of sight distance can be provided in either direction, well more than the required minimum. Further, the driveway has been designed to allow even the largest vehicles to turn smoothly onto and off of US 9. In sum, based on the data contained herein, it is concluded that the proposed facility will operate safely and that it will have a minimal impact on area traffic operating conditions.

Sincerely,

KIMLEY-HORN OF NEW YORK, P.C.



By: John Canning, P.E.
Project Manager

Attachments

- Designated Qualifying and Access Highways in New York State
 - Trip Generation, Land Use Code 150: Warehousing
 - Automatic Traffic Recorder (ATR) Study on US 9
 - Vegetation Removal Plan
 - Truck Maneuvering Plans

Designated Qualifying and Access Highways in New York State

**OFFICIAL DESCRIPTION
OF DESIGNATED
QUALIFYING AND ACCESS
HIGHWAYS
IN
NEW YORK STATE**

August 2019



Office of Traffic Safety & Mobility
50 Wolf Road, POD 53
Albany, New York
12232

TABLE OF CONTENTS

INTRODUCTION.....	1
53' TRAILER ROUTES IN NEW YORK CITY.....	4
2015 NYC LAW EXPANDING 53' TRAILER ROUTES IN NYC.....	5
COUNTIES AND REGIONAL OFFICES.....	6
COMMUNICATION DIRECTORY.....	7
DEFINITIONS.....	8
ADDITIONAL RELEVANT INFORMATION.....	8
RESTRICTION CODES.....	10
NATIONAL NETWORK (i.e. QUALIFYING HIGHWAYS).....	12
QUALIFYING & ACCESS HIGHWAYS - INTERSTATE ROUTES.....	18
QUALIFYING & ACCESS HIGHWAYS - U.S. HIGHWAY ROUTES.....	21
QUALIFYING & ACCESS HIGHWAYS - NY STATE HIGHWAY ROUTES.....	26
ACCESS HIGHWAYS – COUNTY HIGHWAY ROUTES.....	66
ACCESS HIGHWAYS UN-NUMBERED COUNTY HIGHWAYS.....	90
ACCESS HIGHWAYS - LOCAL HIGHWAYS (CITY, TOWN, OR VILLAGE).....	92
A.....	92
B.....	95
C.....	100
D.....	106
E.....	108
F.....	112
G.....	115
H.....	118
I.....	121
J.....	122
K.....	123
L.....	125
M.....	128
N.....	133
O.....	136
P.....	139
Q.....	143
R.....	144
S.....	147
T.....	154
U.....	157
V.....	158
W.....	159
X.....	164
Y.....	165
Z.....	166
NUMBERED STREETS.....	167

INTRODUCTION

This book lists Qualifying (National Network) and Access Highways designated for use by Special Dimension Vehicles in New York as of August 1, 2019. The chart on page 2 details the type of vehicles allowed on the Designated System. These vehicles, or vehicle combinations, were initially authorized by the 1982 Federal Surface Transportation Assistance Act and subsequent state legislation, including the 1990 Omnibus Truck Safety Bill. They do not include longer combination vehicles (LCV's) such as triple 28 foot and twin 48 foot trailer combinations. While 48 foot tandem combinations are currently allowed in New York, they are restricted to the New York State Thruway System and some immediately adjacent highways listed in § 385(16) of the New York Vehicle & Traffic Law. Unless otherwise specified, the listed routes may be used by all Special Dimension Vehicles.

Special Dimension Vehicles (SDVs) may also operate on all highways within one road mile of Qualifying Highways (National Network) using the most reasonable and practicable route available, except for specific safety reasons on individual routes. The National Network consist of all Interstates plus specifically designated other highways.

Under the 1990 Omnibus Truck Safety Bill, New York authorized the use of 53 foot trailer combinations effective November 1990. Per § 385(3)(e) of the Vehicle & Traffic Law, the 53 foot trailer combinations are restricted to the Qualifying and Access Highway system. Because New York City felt that 53 foot trailers would be unable to maneuver effectively on City streets, a provision was included in the legislation that prohibited the vehicles within the City. However, in order to provide service to Long Island, one specific route corridor consisting of the following interstate highways was approved for travel to Long Island. The New York City interstate routes approved for 53 foot trailers (see map on page 3) are as follows:

I 95 - from Bronx-Westchester County line to I 695
I 695 - from I 95 to I 295
I 295 - from I 695 to I 495 via Throgs Neck Bridge
I 495 - from I 295 to Queens-Nassau County line

Revised 4/1/15: New 53' Routes in NYC

Effective March 5, 2015, NYC added two additional routes to be utilized by 53' trailers within NYC (see page 4 for a description and map). Section 4-15 of Title 34 of the Rules of the City of New York was amended to allow 53' trailers on the following routes in NYC:

I 95 - from the New Jersey State Line on the upper level of the George Washington Bridge to I 695
I 678 - from I 95 to John F. Kennedy International Airport

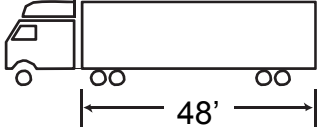
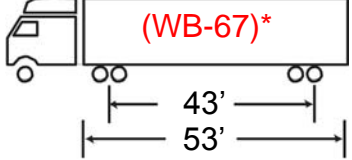
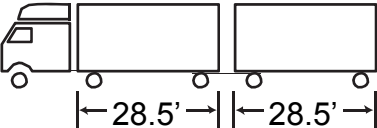
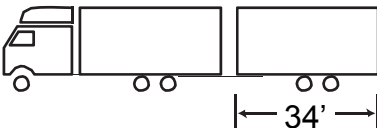

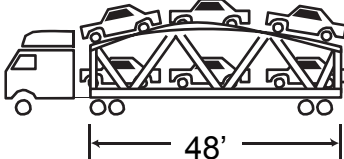
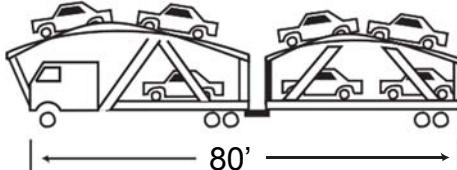
**NEW YORK STATE DEPARTMENT OF TRANSPORTATION
TRUCK ACCESS ON NEW YORK HIGHWAYS**

ALLOWABLE WIDTHS

102" ALL QUALIFYING AND ACCESS HIGHWAYS; OTHER HIGHWAYS WITH 10 FT. LANES. (EXCLUDES NYC)

96" HIGHWAYS WITH LESS THAN 10 FT. LANES; WHERE SPECIFICALLY DESIGNATED; NYC

ALLOWABLE LENGTHS

	QUALIFYING	ACCESS	OTHER	
SEMI-TRAILER WITH CAB	48' *	48' *	48' 65'	
SEMI-TRAILER WITH 43' KINGPIN WITH CAB	53' (A) *	53' *	NA NA	
TANDEM TRAILER WITH CAB	28.5' *	28.5' *	28.5' 65' (C)	
MAXI-CUBE	65'	65'	65'	
TRIPLE SADDLE MOUNT	*	*	97'	
AUTO CARRIER CONVENTIONAL	*(B)	*(B)	65' (B)	
STINGER-STEERED	80' (B)	80' (B)	65' (B)	

*UNLIMITED LENGTH NA – NOT ALLOWED
NOTE: (A) IN NYC, PERMITTED ONLY ON SPECIFICALLY DESIGNATED INTERSTATES
(B) EXCLUDING PERMITTED OVERHANG 4' FRONT AND 6' REAR
(C) EXCLUDING NEW YORK CITY, NASSAU COUNTY, AND SUFFOLK COUNTY

* This text added by Kimley-Horn.
WB-67 vehicles pull 53' trailers.

DEFINITIONS

Qualifying Highway - A highway designated as part of the Surface Transportation Assistance Act (STAA) of 1982 which allows STAA vehicles (tractor trailers combinations greater than 65 feet, tractor with 28 foot tandem trailers, maxi-cubes, triple saddle mounts, stinger-steered auto carriers and boat transporters) and 53' trailers to use that highway and any other highway within one linear mile of the Qualifying highway.

National Network Highway - Same as Qualifying Highway

Access Highway - A highway designated for use by STAA vehicles and 53' trailers. Unlike a Qualifying Highway, these vehicle combinations may not travel off the access highway for any distance.

ADDITIONAL RELEVANT INFORMATION

Boat Transporter - Vehicle & Traffic Law Sections

§ 101-b: Boat transporter. Any vehicle combination designed and used specifically for the transport of boats.

§ 127: Overhang. That portion of a transported vehicle or boat which extends beyond the front or rear bumper of an automobile transporter or stinger-steered automobile transporter or boat transporter or stinger-steered boat transporter.

§ 145-f: Stinger-steered boat transporter. A boat transporter configured as a semitrailer combination wherein the fifth wheel is located on a drop frame located behind and below the rear-most axle of the power unit.

§ 385-4-b-6: Stinger-steered automobile transporters or stinger-steered boat transporters, while operating on qualifying and access highways. Such vehicles shall not, however, exceed seventy-five feet exclusive of an overhang of not more than three feet on the front and four feet on the rear of the vehicle.

§ 385-4-c: Notwithstanding the provisions of paragraph (a) of this subdivision, an overhang of not more than three feet on the front and four feet on the rear of an automobile transporter or stinger-steered automobile transporter or a boat transporter or stinger-steered boat transporter shall be permitted.

Kingpin Distance - Vehicle and Traffic Law Section

§ 385(3)(e): Except in any city not wholly included within one county, any semitrailer with a length in excess of forty-eight feet, but not exceeding fifty-three feet, may be operated on any qualifying highway or specifically designated access highway if the distance between the kingpin of the semitrailer and the centerline of the rear axle does not exceed forty-three feet and if the semitrailer is equipped with a rear-end protective device of substantial construction consisting of a continuous lateral beam extending to within four inches of the lateral extremities of the semitrailer and located not more than twenty-two inches from the surface as measured with the vehicle empty and on a level surface. In addition, such vehicles may be operated on that portion of interstate ninety-five which connects interstate two hundred eighty-seven with interstate two hundred ninety-five, that portion of interstate two hundred ninety-five which

**HIGHWAYS DESIGNATED AS QUALIFYING OR ACCESS HIGHWAYS
FOR LARGER DIMENSION VEHICLES**

**SOURCES: 17 NYCRR PART 8000
17 NYCRR PART 8100**

QUALIFYING & ACCESS HIGHWAYS - U.S. HIGHWAY ROUTES

Note: Unless a highway description contains the term QUALIFYING HIGHWAY, then it is only an Access Highway.

- US 1 I 95 (Exit 15) to the New York City-Village of Pelham Manor line in the City of New Rochelle and the Village of Pelham Manor. (WESTCHESTER)
- US 2 US 11 to the New York-Vermont State line (0.9 miles) in the Town of Champlain and the Village of Rouses Point. (CLINTON)
- US 4 New York-Vermont State line to NY 197 in the Towns of Hampton, Whitehall, Fort Ann, Kingsbury and Fort Edward, and the Villages of Whitehall, Fort Ann, Hudson Falls and Fort Edward. (WASHINGTON)
- (US 4/NY 29 overlap) - NY 29 to NY 29 in the Town of Saratoga and the Village of Schuylerville. (SARATOGA)
- (US 4/NY 32 overlap) - Northern Town of Stillwater-Village of Stillwater line to NY 2 (Broad Street) in the City of Mechanicville, the Towns of Stillwater, Halfmoon and Waterford, and the Villages of Stillwater and Waterford. (SARATOGA)
- (Mill Street, Vandenburg Avenue and North Greenbush Road) - NY 378 (Burden Avenue) to NY 136 (Williams Road) in the City of Troy and Town of North Greenbush. (RENSSELAER)
- (North Greenbush Road and Troy Road) - NY 43 to I 90 in the Towns of North Greenbush and East Greenbush. (RENSSELAER)
- US 6 US 209 overlap (Pike Street and East Main Street) - New York-Pennsylvania State line at Pike Street to I 84 (Exit 1 westbound on-ramp) (1.6 ± miles) in the City of Port Jervis and Town of Deer Park. (ORANGE)
- CR 55 (Smith Corners-New Jersey State Line Road) and CR 35 (Mountain Road) to junction of CR 12 (Lower Road) in the Towns of Greenville and Wawayanda. (ORANGE)
- US 9 to NY 312 in the City of Peekskill, Towns of Cortlandt, Yorktown, Somers, Carmel and Southeast. (WESTCHESTER and PUTNAM)
- US 9** U.S.-Canadian Border to southern City line of the City of Plattsburgh (a distance of 21.0 miles) in the City of Plattsburgh, the Towns of Champlain, Chazy, Beekmantown and Plattsburgh, and the Village of Champlain. (CLINTON)

NY 9N to I 87 (Exit 33) in the Towns of Chesterfield and the Village of Keesville. (ESSEX)

NY 73 to NY 910K (Blue Ridge Road) in the Towns of Elizabethtown and North Hudson. (ESSEX)

NY 74 to I 87 (Exit 27) in the Town of Schroon. (ESSEX)

Natural Stone Bridge Road to Valley Farm Road in the Town of Chester. (WARREN)

NY 28 to I 87 (Exit 23) Diamond Point Road in the Town of Warrensburg. (WARREN)

NY 149 to a point 0.6 miles south of NY 254 in the Town of Queensbury. (WARREN)

Mohican Street to I 87 (Exit 17) in the City of Glens Falls, the Town of Moreau, and the Village of South Glens Falls. (WARREN and SARATOGA)

Junction of Marion Avenue/US 9/NY 50 to Van Dam Street in the City of Saratoga Springs. (SARATOGA)

Adelphi Street to I 87 (Exit 13) in the City of Saratoga Springs and the Town of Malta. (SARATOGA)

(US 9/NY 67 overlap) - Northern junction of US 9 & NY 67 to the southern junction of US 9 & NY 67 in the Town of Malta. (SARATOGA)

Northway Reefer & Truck Outfitters, Inc. terminal to NY 911T (Ushers Road) (1.2 ± miles) in the Town of Clifton Park. (SARATOGA)

(Halfmoon Parkway and Loudon Road) - NY 146 to NY 7 in the Towns of Halfmoon and Colonie. (SARATOGA and ALBANY)

(Columbia Turnpike) - I 787 to the junction of US 9/US 20 (Schodack) in the Cities of Albany and Rensselaer, and the Towns of East Greenbush and Schodack. (ALBANY and RENSSELAER)

Junction of US 9/US 20 (Schodack) to NY 9H in the Towns of Schodack and Kinderhook. (RENSSELAER and COLUMBIA)

US Rt 9 Continued, Access Highway from Healy Blvd in Hudson to I-87/287 in Tarrytown, Including through Philipstown.

Healy Boulevard (Hudson) to the I 87/I 287 (Exit 9) in the Cities of Hudson, Poughkeepsie and Peekskill, Towns of Greenport, Livingston, Clermont, Red Hook, Rhinebeck, Hyde Park, Poughkeepsie, Wappinger, Fishkill, Philipstown, Cortlandt, Ossining, Mount Pleasant and Greenburgh, and the Villages of Red Hook, Rhinebeck, Wappingers Falls, Fishkill, Croton-on-Hudson, Briarcliff Manor, Sleepy Hollow and Tarrytown. (COLUMBIA, DUTCHESS, PUTNAM and WESTCHESTER)

Trip Generation, Land Use Code 150: Warehousing

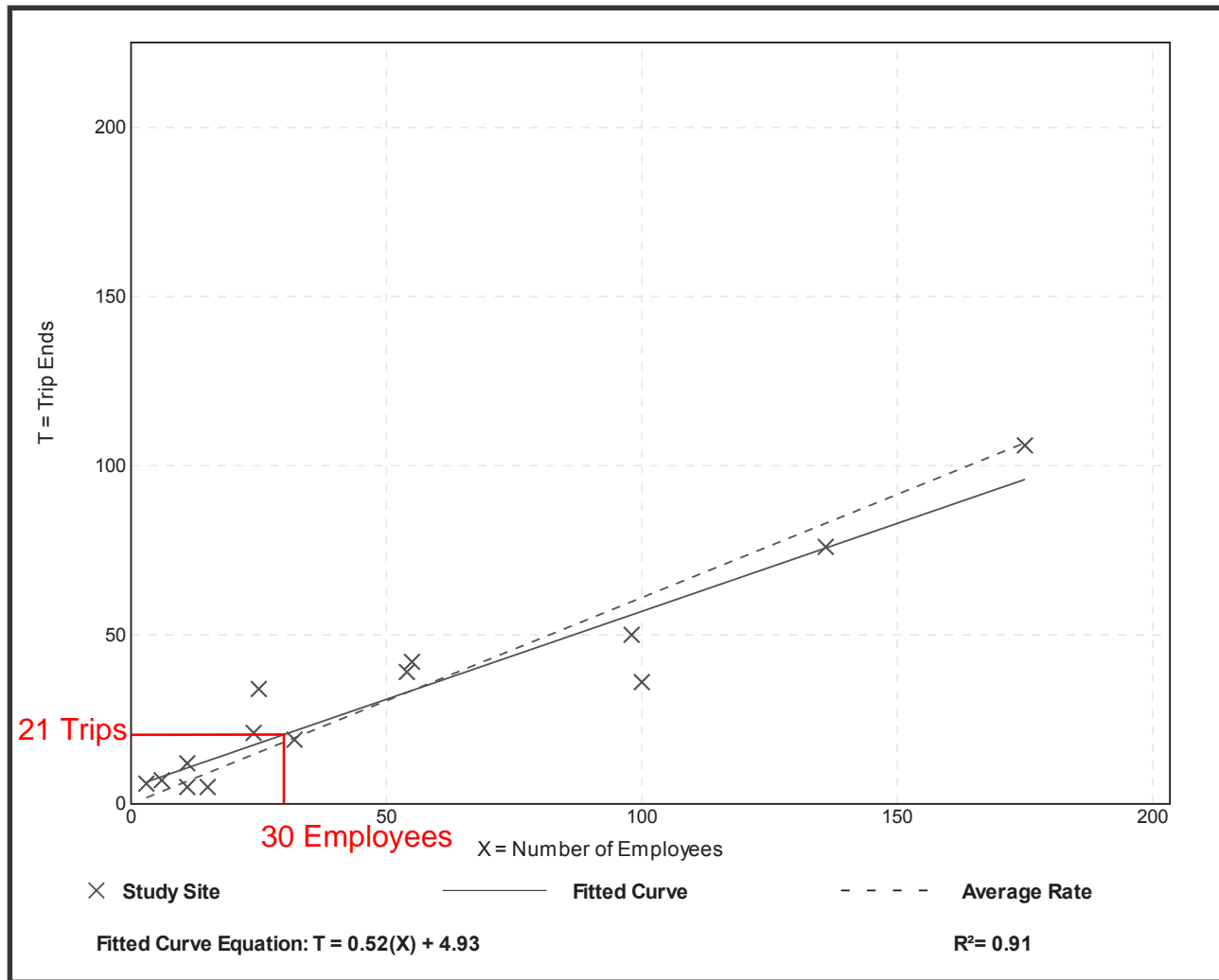
Warehousing (150)

Vehicle Trip Ends vs: Employees
On a: Weekday,
Peak Hour of Adjacent Street Traffic,
One Hour Between 7 and 9 a.m.
Setting/Location: General Urban/Suburban
 Number of Studies: 14
 Avg. Num. of Employees: 53
 Directional Distribution: 72% entering, 28% exiting

Vehicle Trip Generation per Employee

Average Rate	Range of Rates	Standard Deviation
0.61	0.33 - 2.00	0.23

Data Plot and Equation



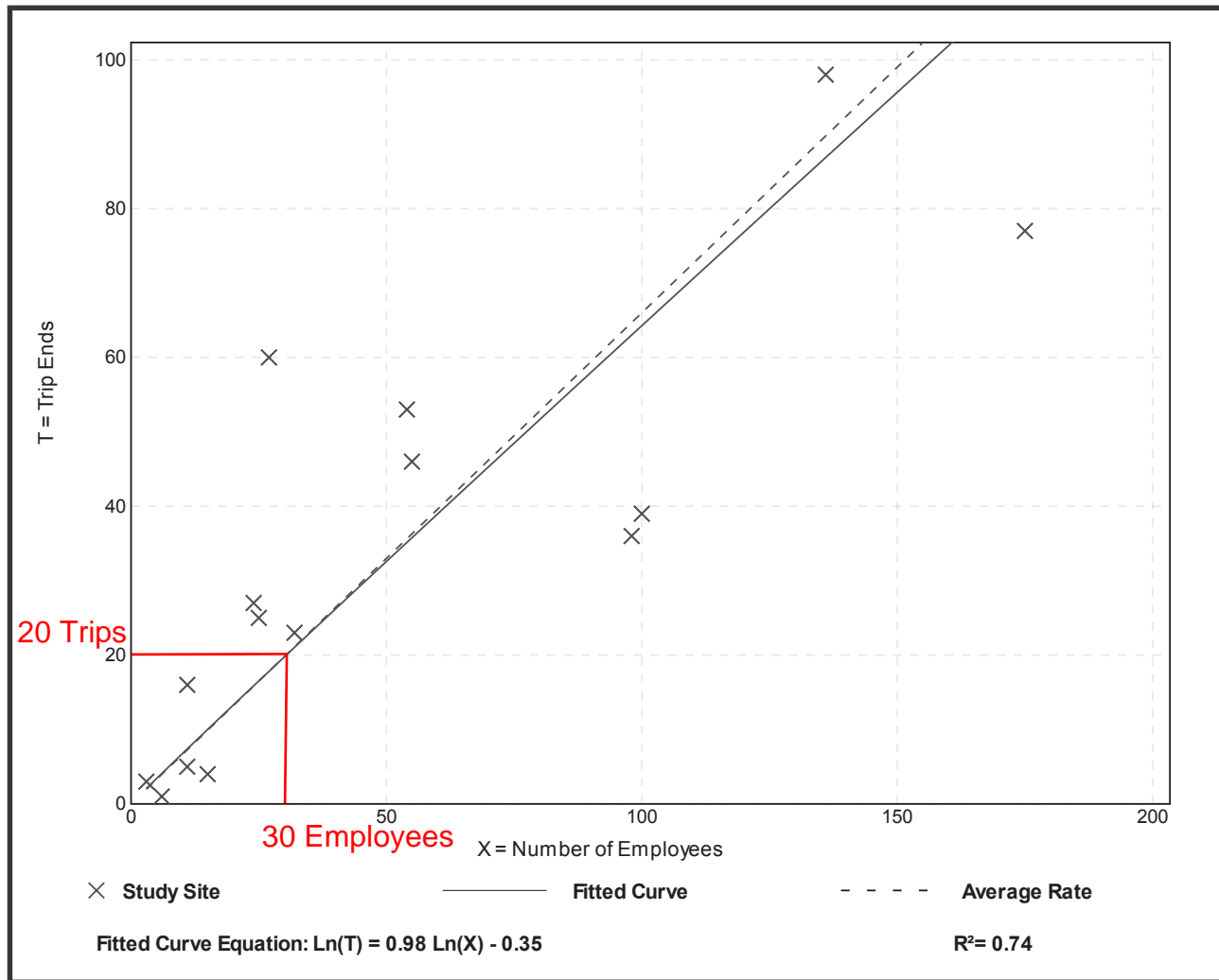
Warehousing (150)

Vehicle Trip Ends vs: Employees
On a: Weekday,
Peak Hour of Adjacent Street Traffic,
One Hour Between 4 and 6 p.m.
Setting/Location: General Urban/Suburban
 Number of Studies: 15
 Avg. Num. of Employees: 51
 Directional Distribution: 36% entering, 65% exiting

Vehicle Trip Generation per Employee

Average Rate	Range of Rates	Standard Deviation
0.66	0.17 - 2.22	0.40

Data Plot and Equation



Automatic Traffic Recorder (ATR) Study on US 9

Volume and Speed Data

TRAFFIC DATABANK LLC

716 SOUTH SIXTH AVE
MT VERNON,NY,10550

Site Code:
Station ID:
ALBANY POST RD N OF 1ST ST
PHILIPSTOWN,NY
Latitude: 0' 0.0000 Undefined

Start Time	27-Jul-20		Tue		Wed		Thu		Fri		Sat		Sun		Week Average	
	NB	SB	NB	SB	NB	SB	NB	SB	NB	SB	NB	SB	NB	SB	NB	SB
12:00 AM	*	*	*	*	63	16	84	29	78	26	72	35	*	*	74	26
01:00	*	*	*	*	40	34	21	25	29	31	33	33	*	*	31	31
02:00	*	*	*	*	21	25	18	18	14	24	29	12	*	*	20	20
03:00	*	*	*	*	30	42	15	37	18	50	23	26	*	*	22	39
04:00	*	*	*	*	28	103	42	110	37	105	15	54	*	*	30	93
05:00	*	*	*	*	111	323	107	330	97	304	61	115	*	*	94	268
06:00	*	*	*	*	237	664	245	639	228	577	137	248	*	*	212	532
07:00	*	*	*	*	343	657	350	655	345	630	237	245	*	*	319	547
08:00	*	*	*	*	368	496	346	500	365	446	277	224	*	*	339	416
09:00	*	*	*	*	261	372	275	321	330	358	312	259	*	*	294	328
10:00	*	*	*	*	302	351	327	317	373	326	357	291	*	*	340	321
11:00	*	*	143	137	353	304	381	287	395	338	438	300	*	*	342	273
12:00 PM	*	*	373	316	393	351	387	359	450	390	470	338	*	*	415	351
01:00	*	*	370	326	353	326	380	353	438	356	474	416	*	*	403	344
02:00	*	*	482	363	514	366	494	359	579	360	435	400	*	*	501	370
03:00	*	*	723	353	686	372	676	366	707	392	469	390	*	*	652	375
04:00	*	*	788	390	766	439	784	422	767	466	400	413	*	*	701	426
05:00	*	*	596	360	690	384	651	365	649	424	356	366	*	*	588	380
06:00	*	*	427	282	424	301	510	272	467	347	*	*	*	*	457	300
07:00	*	*	280	175	283	210	275	198	347	232	*	*	*	*	296	204
08:00	*	*	177	171	223	159	232	172	244	188	*	*	*	*	219	172
09:00	*	*	154	134	148	137	150	137	188	167	*	*	*	*	160	144
10:00	*	*	103	97	113	108	91	118	119	110	*	*	*	*	106	108
11:00	*	*	107	64	119	81	100	52	120	81	*	*	*	*	112	70
Lane Day	0	0	4723	3168	6869	6562	6941	6441	7384	6728	4595	4165	0	0	6727	6138
AM Peak	-	-	11:00	11:00	08:00	06:00	11:00	07:00	11:00	07:00	11:00	11:00	-	-	11:00	07:00
Vol.	-	-	143	137	368	664	381	655	395	630	438	300	-	-	342	547
PM Peak	-	-	16:00	16:00	16:00	16:00	16:00	16:00	16:00	16:00	13:00	13:00	-	-	16:00	16:00
Vol.	-	-	788	390	766	439	784	422	767	466	474	416	-	-	701	426

Comb. Total	0	7891	13431	13382	14112	8760	0	12865
ADT	ADT 13,642	AADT 13,642						

TRAFFIC DATABANK LLC

716 SOUTH SIXTH AVE
MT VERNON,NY,10550

Site Code:
Station ID:
ALBANY POST RD N OF 1ST ST
PHILIPSTOWN,NY
Latitude: 0' 0.0000 Undefined

NB

Start Time	15	16	21	26	31	36	41	46	51	56	61	66	71	76	Total	Pace Speed	Number in Pace
07/28/20	*	*	*	*	*	*	*	*	*	*	*	*	*	*	*	*	*
01:00	*	*	*	*	*	*	*	*	*	*	*	*	*	*	*	*	*
02:00	*	*	*	*	*	*	*	*	*	*	*	*	*	*	*	*	*
03:00	*	*	*	*	*	*	*	*	*	*	*	*	*	*	*	*	*
04:00	*	*	*	*	*	*	*	*	*	*	*	*	*	*	*	*	*
05:00	*	*	*	*	*	*	*	*	*	*	*	*	*	*	*	*	*
06:00	*	*	*	*	*	*	*	*	*	*	*	*	*	*	*	*	*
07:00	*	*	*	*	*	*	*	*	*	*	*	*	*	*	*	*	*
08:00	*	*	*	*	*	*	*	*	*	*	*	*	*	*	*	*	*
09:00	*	*	*	*	*	*	*	*	*	*	*	*	*	*	*	*	*
10:00	*	*	*	*	*	*	*	*	*	*	*	*	*	*	*	*	*
11:00	0	1	1	0	8	16	54	48	11	3	1	0	0	0	143	41-50	102
12 PM	0	3	0	0	3	29	104	147	70	15	2	0	0	0	373	41-50	251
13:00	0	3	7	1	8	31	113	125	71	10	1	0	0	0	370	41-50	238
14:00	0	2	5	1	3	18	161	193	90	8	1	0	0	0	482	41-50	354
15:00	0	4	16	13	21	92	178	283	104	11	1	0	0	0	723	41-50	461
16:00	0	0	3	8	14	54	239	362	97	11	0	0	0	0	788	41-50	601
17:00	0	1	4	0	5	40	149	269	112	14	2	0	0	0	596	41-50	418
18:00	0	5	2	0	1	30	90	166	118	14	0	1	0	0	427	46-55	284
19:00	0	0	0	0	1	7	48	123	80	18	3	0	0	0	280	46-55	203
20:00	0	0	1	0	1	6	22	95	44	6	2	0	0	0	177	46-55	139
21:00	0	0	1	0	0	8	34	68	36	7	0	0	0	0	154	46-55	104
22:00	0	0	1	0	2	7	23	36	26	8	0	0	0	0	103	46-55	62
23:00	0	1	0	0	0	3	12	38	39	11	2	1	0	0	107	46-55	77
Total	0	20	41	23	67	341	1227	1953	898	136	15	2	0	0	4723		
Percent	0.0%	0.4%	0.9%	0.5%	1.4%	7.2%	26.0%	41.4%	19.0%	2.9%	0.3%	0.0%	0.0%	0.0%			
AM Peak		11:00	11:00		11:00	11:00	11:00	11:00	11:00	11:00	11:00				11:00		
Vol.		1	1		8	16	54	48	11	3	1				143		
PM Peak		18:00	15:00	15:00	15:00	15:00	16:00	16:00	18:00	19:00	19:00	18:00			16:00		
Vol.		5	16	13	21	92	239	362	118	18	3	1			788		

TRAFFIC DATABANK LLC

716 SOUTH SIXTH AVE
MT VERNON,NY,10550

Site Code:
Station ID:
ALBANY POST RD N OF 1ST ST
PHILIPSTOWN,NY
Latitude: 0' 0.0000 Undefined

NB

Start Time	1	16	21	26	31	36	41	46	51	56	61	66	71	76	Total	Pace Speed	Number in Pace
	15	20	25	30	35	40	45	50	55	60	65	70	75	999			
07/29/20	0	0	1	0	1	1	5	27	18	9	1	0	0	0	63	46-55	45
01:00	0	0	0	0	1	6	9	11	10	3	0	0	0	0	40	46-55	21
02:00	0	0	0	0	0	1	5	10	5	0	0	0	0	0	21	41-50	15
03:00	0	0	0	0	2	2	2	7	15	1	1	0	0	0	30	46-55	22
04:00	0	2	0	0	1	1	0	10	13	0	1	0	0	0	28	46-55	23
05:00	0	1	0	0	0	0	13	41	37	16	2	1	0	0	111	46-55	78
06:00	0	1	0	0	0	5	22	83	89	31	6	0	0	0	237	46-55	172
07:00	0	1	3	1	3	7	62	132	104	27	2	1	0	0	343	46-55	236
08:00	0	7	2	0	3	18	83	157	77	19	2	0	0	0	368	41-50	240
09:00	0	4	3	0	2	14	88	108	39	3	0	0	0	0	261	41-50	196
10:00	1	3	3	1	4	31	78	128	47	5	1	0	0	0	302	41-50	206
11:00	0	2	3	4	9	24	97	156	48	9	1	0	0	0	353	41-50	253
12 PM	0	3	7	2	9	13	138	164	53	4	0	0	0	0	393	41-50	302
13:00	3	6	9	5	27	74	103	80	42	4	0	0	0	0	353	41-50	183
14:00	0	2	4	5	11	43	116	220	93	18	2	0	0	0	514	41-50	336
15:00	0	1	6	2	17	67	197	256	124	16	0	0	0	0	686	41-50	453
16:00	17	32	28	11	30	70	218	250	93	14	2	1	0	0	766	41-50	468
17:00	0	4	3	0	5	55	227	260	120	16	0	0	0	0	690	41-50	487
18:00	0	1	3	0	1	16	94	210	84	15	0	0	0	0	424	41-50	304
19:00	0	2	2	2	1	9	57	142	58	7	2	1	0	0	283	46-55	200
20:00	1	0	1	0	4	11	52	93	50	11	0	0	0	0	223	41-50	145
21:00	0	0	1	0	0	13	34	61	31	8	0	0	0	0	148	41-50	95
22:00	0	0	0	0	0	6	28	42	24	10	2	0	1	0	113	41-50	70
23:00	0	0	0	0	0	1	17	42	44	11	4	0	0	0	119	46-55	86
Total	22	72	79	33	131	488	1745	2690	1318	257	29	4	1	0	6869		
Percent	0.3%	1.0%	1.2%	0.5%	1.9%	7.1%	25.4%	39.2%	19.2%	3.7%	0.4%	0.1%	0.0%	0.0%			
AM Peak	10:00	08:00	07:00	11:00	11:00	10:00	11:00	08:00	07:00	06:00	06:00	05:00			08:00		
Vol.	1	7	3	4	9	31	97	157	104	31	6	1			368		
PM Peak	16:00	16:00	16:00	16:00	16:00	13:00	17:00	17:00	15:00	14:00	23:00	16:00	22:00		16:00		
Vol.	17	32	28	11	30	74	227	260	124	18	4	1	1		766		

TRAFFIC DATABANK LLC

716 SOUTH SIXTH AVE
MT VERNON,NY,10550

Site Code:
Station ID:
ALBANY POST RD N OF 1ST ST
PHILIPSTOWN,NY
Latitude: 0' 0.0000 Undefined

NB

Start Time	1	16	21	26	31	36	41	46	51	56	61	66	71	76	Total	Pace Speed	Number in Pace
	15	20	25	30	35	40	45	50	55	60	65	70	75	999			
07/30/20	0	0	0	0	0	2	11	33	27	7	3	1	0	0	84	46-55	60
01:00	0	0	1	0	1	0	6	7	5	1	0	0	0	0	21	41-50	13
02:00	0	0	0	0	0	1	4	3	6	4	0	0	0	0	18	51-60	10
03:00	0	0	0	0	0	0	2	5	6	1	1	0	0	0	15	46-55	11
04:00	0	2	0	0	0	3	6	13	16	1	1	0	0	0	42	46-55	29
05:00	0	0	0	0	0	0	15	39	32	20	1	0	0	0	107	46-55	71
06:00	0	1	1	0	2	9	32	91	80	27	2	0	0	0	245	46-55	171
07:00	0	0	6	0	3	20	44	155	103	15	4	0	0	0	350	46-55	258
08:00	0	0	5	0	5	14	77	164	69	12	0	0	0	0	346	41-50	241
09:00	0	5	6	2	3	23	57	121	51	5	2	0	0	0	275	41-50	178
10:00	0	4	2	0	5	26	102	133	46	9	0	0	0	0	327	41-50	235
11:00	0	1	6	0	6	24	141	139	56	6	2	0	0	0	381	41-50	280
12 PM	0	4	3	1	4	31	97	200	39	8	0	0	0	0	387	41-50	297
13:00	0	3	2	0	8	34	122	156	45	10	0	0	0	0	380	41-50	278
14:00	0	3	4	0	4	43	147	190	84	18	1	0	0	0	494	41-50	337
15:00	0	1	5	6	47	127	230	190	61	8	1	0	0	0	676	41-50	420
16:00	11	37	22	26	51	64	216	252	88	14	3	0	0	0	784	41-50	468
17:00	0	1	1	0	3	64	147	301	119	14	1	0	0	0	651	41-50	448
18:00	0	2	3	0	1	19	148	235	83	18	1	0	0	0	510	41-50	383
19:00	0	0	3	1	2	5	58	142	49	14	1	0	0	0	275	41-50	200
20:00	0	0	0	0	0	5	49	103	64	9	2	0	0	0	232	46-55	167
21:00	0	0	1	0	1	2	25	82	27	11	1	0	0	0	150	46-55	109
22:00	0	0	0	0	0	6	16	38	23	6	2	0	0	0	91	46-55	61
23:00	0	0	0	0	0	3	10	32	38	10	7	0	0	0	100	46-55	70
Total	11	64	71	36	146	525	1762	2824	1217	248	36	1	0	0	6941		
Percent	0.2%	0.9%	1.0%	0.5%	2.1%	7.6%	25.4%	40.7%	17.5%	3.6%	0.5%	0.0%	0.0%	0.0%			
AM Peak		09:00	07:00	09:00	11:00	10:00	11:00	08:00	07:00	06:00	07:00	00:00			11:00		
Vol.		5	6	2	6	26	141	164	103	27	4	1			381		
PM Peak	16:00	16:00	16:00	16:00	16:00	15:00	15:00	17:00	17:00	14:00	23:00				16:00		
Vol.	11	37	22	26	51	127	230	301	119	18	7				784		

TRAFFIC DATABANK LLC

716 SOUTH SIXTH AVE
MT VERNON,NY,10550

Site Code:
Station ID:
ALBANY POST RD N OF 1ST ST
PHILIPSTOWN,NY
Latitude: 0' 0.0000 Undefined

NB

Start Time	15	16:20	21:25	26:30	31:35	36:40	41:45	46:50	51:55	56:60	61:65	66:70	71:75	76:999	Total	Pace Speed	Number in Pace
07/31/20	0	0	0	0	0	5	19	25	21	8	0	0	0	0	78	46-55	46
01:00	0	0	0	0	0	1	6	17	4	1	0	0	0	0	29	41-50	23
02:00	0	0	0	0	0	1	2	2	7	0	1	1	0	0	14	46-55	9
03:00	0	0	0	0	0	1	6	4	6	1	0	0	0	0	18	41-50	10
04:00	0	0	0	0	0	1	7	24	4	1	0	0	0	0	37	41-50	31
05:00	0	0	0	0	1	3	15	43	25	7	3	0	0	0	97	46-55	68
06:00	0	2	3	0	0	5	22	88	90	15	3	0	0	0	228	46-55	178
07:00	0	1	3	1	6	20	82	135	79	16	2	0	0	0	345	41-50	217
08:00	0	2	8	1	9	57	121	117	44	6	0	0	0	0	365	41-50	238
09:00	0	3	1	0	6	19	94	155	47	3	2	0	0	0	330	41-50	249
10:00	0	3	7	2	5	38	141	122	48	7	0	0	0	0	373	41-50	263
11:00	0	4	5	0	6	36	134	145	54	8	2	1	0	0	395	41-50	279
12 PM	0	5	5	1	7	37	130	193	67	5	0	0	0	0	450	41-50	323
13:00	0	1	6	0	2	33	120	197	70	9	0	0	0	0	438	41-50	317
14:00	0	4	1	0	6	55	181	236	79	14	3	0	0	0	579	41-50	417
15:00	0	6	5	12	28	72	156	283	134	10	1	0	0	0	707	41-50	439
16:00	1	6	11	4	29	105	271	235	99	6	0	0	0	0	767	41-50	506
17:00	0	1	4	1	3	47	184	278	121	8	2	0	0	0	649	41-50	462
18:00	0	0	5	0	2	20	102	191	129	16	2	0	0	0	467	46-55	320
19:00	0	0	3	0	8	18	74	148	77	17	2	0	0	0	347	46-55	225
20:00	0	3	2	1	1	7	47	105	67	10	1	0	0	0	244	46-55	172
21:00	0	0	1	0	1	6	49	73	53	4	1	0	0	0	188	46-55	126
22:00	0	1	0	0	0	5	18	48	41	5	0	1	0	0	119	46-55	89
23:00	0	0	1	0	0	2	21	40	37	16	3	0	0	0	120	46-55	77
Total	1	42	71	23	120	594	2002	2904	1403	193	28	3	0	0	7384		
Percent	0.0%	0.6%	1.0%	0.3%	1.6%	8.0%	27.1%	39.3%	19.0%	2.6%	0.4%	0.0%	0.0%	0.0%			
AM Peak		11:00	08:00	10:00	08:00	08:00	10:00	09:00	06:00	07:00	05:00	02:00			11:00		
Vol.		4	8	2	9	57	141	155	90	16	3	1			395		
PM Peak	16:00	15:00	16:00	15:00	16:00	16:00	16:00	15:00	15:00	19:00	14:00	22:00			16:00		
Vol.	1	6	11	12	29	105	271	283	134	17	3	1			767		

TRAFFIC DATABANK LLC

716 SOUTH SIXTH AVE
MT VERNON,NY,10550

Site Code:
Station ID:
ALBANY POST RD N OF 1ST ST
PHILIPSTOWN,NY
Latitude: 0' 0.0000 Undefined

NB

Start Time	15	20	25	30	35	40	45	50	55	60	65	70	75	999	Total	Pace Speed	Number in Pace
08/01/20	0	0	0	0	0	1	9	31	19	10	1	0	1	0	72	46-55	50
01:00	0	0	0	0	0	0	11	10	8	2	2	0	0	0	33	41-50	21
02:00	0	0	0	0	0	2	3	13	9	2	0	0	0	0	29	46-55	22
03:00	0	0	0	0	0	0	3	11	8	1	0	0	0	0	23	46-55	19
04:00	0	0	1	0	0	0	2	5	4	3	0	0	0	0	15	45-54	9
05:00	0	1	0	0	0	0	4	22	21	11	2	0	0	0	61	46-55	43
06:00	0	0	0	0	1	2	12	42	54	23	3	0	0	0	137	46-55	96
07:00	0	2	2	0	1	2	38	100	70	18	4	0	0	0	237	46-55	170
08:00	0	0	2	0	0	2	40	144	72	15	2	0	0	0	277	46-55	216
09:00	0	5	4	3	5	10	98	123	53	10	0	1	0	0	312	41-50	221
10:00	0	4	3	0	3	17	100	173	46	6	1	3	1	0	357	41-50	273
11:00	0	3	6	1	4	32	115	185	84	6	1	1	0	0	438	41-50	300
12 PM	0	1	4	0	2	31	151	206	67	7	0	1	0	0	470	41-50	357
13:00	0	3	5	0	4	55	145	199	61	2	0	0	0	0	474	41-50	344
14:00	0	2	1	1	5	29	112	172	103	9	1	0	0	0	435	41-50	284
15:00	0	1	1	0	8	40	124	199	82	13	1	0	0	0	469	41-50	323
16:00	0	0	2	1	6	20	71	190	89	21	0	0	0	0	400	46-55	279
17:00	0	1	3	0	4	21	81	164	68	13	1	0	0	0	356	41-50	245
18:00	*	*	*	*	*	*	*	*	*	*	*	*	*	*	*	*	*
19:00	*	*	*	*	*	*	*	*	*	*	*	*	*	*	*	*	*
20:00	*	*	*	*	*	*	*	*	*	*	*	*	*	*	*	*	*
21:00	*	*	*	*	*	*	*	*	*	*	*	*	*	*	*	*	*
22:00	*	*	*	*	*	*	*	*	*	*	*	*	*	*	*	*	*
23:00	*	*	*	*	*	*	*	*	*	*	*	*	*	*	*	*	*
Total	0	23	34	6	43	264	1119	1989	918	172	19	6	2	0	4595		
Percent	0.0%	0.5%	0.7%	0.1%	0.9%	5.7%	24.4%	43.3%	20.0%	3.7%	0.4%	0.1%	0.0%	0.0%			
AM Peak		09:00	11:00	09:00	09:00	11:00	11:00	11:00	11:00	06:00	07:00	10:00	00:00		11:00		
Vol.		5	6	3	5	32	115	185	84	23	4	3	1		438		
PM Peak		13:00	13:00	14:00	15:00	13:00	12:00	12:00	14:00	16:00	14:00	12:00			13:00		
Vol.		3	5	1	8	55	151	206	103	21	1	1			474		
Total	34	221	296	121	507	2212	7855	12360	5754	1006	127	16	3	0	30512		
Percent	0.1%	0.7%	1.0%	0.4%	1.7%	7.2%	25.7%	40.5%	18.9%	3.3%	0.4%	0.1%	0.0%	0.0%			

15th Percentile : 40 MPH
 50th Percentile : 46 MPH
85th Percentile : 52 MPH
 95th Percentile : 54 MPH

Stats
 10 MPH Pace Speed : 41-50 MPH
 Number in Pace : 20215
 Percent in Pace : 66.3%
 Number of Vehicles > 55 MPH : 1152
 Percent of Vehicles > 55 MPH : 3.8%
 Mean Speed(Average) : 47 MPH

TRAFFIC DATABANK LLC

716 SOUTH SIXTH AVE
MT VERNON,NY,10550

Site Code:
Station ID:
ALBANY POST RD N OF 1ST ST
PHILIPSTOWN,NY
Latitude: 0' 0.0000 Undefined

SB

Start Time	15	16	21	26	31	36	41	46	51	56	61	66	71	76	Total	Pace Speed	Number in Pace
07/28/20	*	*	*	*	*	*	*	*	*	*	*	*	*	*	*	*	*
01:00	*	*	*	*	*	*	*	*	*	*	*	*	*	*	*	*	*
02:00	*	*	*	*	*	*	*	*	*	*	*	*	*	*	*	*	*
03:00	*	*	*	*	*	*	*	*	*	*	*	*	*	*	*	*	*
04:00	*	*	*	*	*	*	*	*	*	*	*	*	*	*	*	*	*
05:00	*	*	*	*	*	*	*	*	*	*	*	*	*	*	*	*	*
06:00	*	*	*	*	*	*	*	*	*	*	*	*	*	*	*	*	*
07:00	*	*	*	*	*	*	*	*	*	*	*	*	*	*	*	*	*
08:00	*	*	*	*	*	*	*	*	*	*	*	*	*	*	*	*	*
09:00	*	*	*	*	*	*	*	*	*	*	*	*	*	*	*	*	*
10:00	*	*	*	*	*	*	*	*	*	*	*	*	*	*	*	*	*
11:00	0	1	2	7	28	20	47	26	3	2	1	0	0	0	137	41-50	73
12 PM	0	0	4	10	29	52	127	79	15	0	0	0	0	0	316	41-50	206
13:00	0	2	3	6	28	65	143	66	12	1	0	0	0	0	326	39-48	209
14:00	1	2	3	3	29	79	128	104	13	1	0	0	0	0	363	41-50	232
15:00	0	3	4	12	36	70	132	70	23	3	0	0	0	0	353	36-45	202
16:00	0	1	3	2	17	73	144	114	32	3	1	0	0	0	390	41-50	258
17:00	1	1	2	3	6	49	160	112	25	1	0	0	0	0	360	41-50	272
18:00	0	2	1	1	8	26	112	107	23	2	0	0	0	0	282	41-50	219
19:00	0	0	3	2	5	8	60	59	32	5	1	0	0	0	175	41-50	119
20:00	0	0	1	0	0	17	93	49	9	2	0	0	0	0	171	41-50	142
21:00	0	0	3	0	1	18	47	43	18	3	1	0	0	0	134	41-50	90
22:00	0	0	0	0	3	3	23	43	20	5	0	0	0	0	97	41-50	66
23:00	0	0	0	0	0	2	24	14	17	5	1	1	0	0	64	41-50	38
Total	2	12	29	46	190	482	1240	886	242	33	5	1	0	0	3168		
Percent	0.1%	0.4%	0.9%	1.5%	6.0%	15.2%	39.1%	28.0%	7.6%	1.0%	0.2%	0.0%	0.0%	0.0%			
AM Peak		11:00	11:00	11:00	11:00	11:00	11:00	11:00	11:00	11:00	11:00				11:00		
Vol.		1	2	7	28	20	47	26	3	2	1				137		
PM Peak	14:00	15:00	12:00	15:00	15:00	14:00	17:00	16:00	16:00	19:00	16:00	23:00			16:00		
Vol.	1	3	4	12	36	79	160	114	32	5	1	1			390		

TRAFFIC DATABANK LLC

716 SOUTH SIXTH AVE
MT VERNON,NY,10550

Site Code:
Station ID:
ALBANY POST RD N OF 1ST ST
PHILIPSTOWN,NY
Latitude: 0' 0.0000 Undefined

SB

Start Time	15	16:20	21:25	26:30	31:35	36:40	41:45	46:50	51:55	56:60	61:65	66:70	71:75	76:999	Total	Pace Speed	Number in Pace
07/29/20	0	0	1	0	1	1	3	4	5	1	0	0	0	0	16	45-54	9
01:00	0	0	0	2	1	4	8	6	12	1	0	0	0	0	34	46-55	18
02:00	0	0	0	0	0	1	2	10	10	2	0	0	0	0	25	46-55	20
03:00	0	0	0	0	0	0	1	15	23	3	0	0	0	0	42	46-55	38
04:00	0	0	0	0	0	0	8	26	38	30	0	1	0	0	103	51-60	68
05:00	0	0	1	0	1	16	48	127	97	25	6	2	0	0	323	46-55	224
06:00	0	0	2	1	19	70	198	304	65	4	1	0	0	0	664	41-50	502
07:00	0	2	1	13	57	121	228	180	38	13	4	0	0	0	657	41-50	408
08:00	0	1	2	10	37	109	186	129	21	1	0	0	0	0	496	41-50	315
09:00	0	0	4	4	22	81	132	109	19	1	0	0	0	0	372	41-50	241
10:00	2	3	5	4	8	84	132	97	12	4	0	0	0	0	351	41-50	229
11:00	0	1	6	18	24	58	119	61	17	0	0	0	0	0	304	41-50	180
12 PM	0	1	7	9	45	85	132	60	12	0	0	0	0	0	351	36-45	217
13:00	0	1	7	13	22	86	83	48	6	1	0	0	0	0	267	36-45	169
14:00	0	1	5	8	25	62	153	92	19	1	0	0	0	0	366	41-50	245
15:00	1	1	6	7	12	63	175	84	22	1	0	0	0	0	372	41-50	259
16:00	0	3	9	10	29	79	190	105	13	1	0	0	0	0	439	41-50	295
17:00	0	0	3	0	28	69	153	110	20	1	0	0	0	0	384	41-50	263
18:00	0	1	4	4	6	38	125	100	21	2	0	0	0	0	301	41-50	225
19:00	0	1	2	0	1	8	111	69	15	3	0	0	0	0	210	41-50	180
20:00	0	1	5	0	1	26	82	35	8	0	1	0	0	0	159	41-50	117
21:00	0	0	0	0	0	18	53	47	16	2	1	0	0	0	137	41-50	100
22:00	0	0	1	1	0	9	24	41	26	4	2	0	0	0	108	45-54	67
23:00	0	0	0	0	0	4	17	28	22	8	2	0	0	0	81	46-55	50
Total	3	17	71	104	339	1092	2363	1887	557	109	17	3	0	0	6562		
Percent	0.0%	0.3%	1.1%	1.6%	5.2%	16.6%	36.0%	28.8%	8.5%	1.7%	0.3%	0.0%	0.0%	0.0%			
AM Peak	10:00	10:00	11:00	11:00	07:00	07:00	07:00	06:00	05:00	04:00	05:00	05:00			06:00		
Vol.	2	3	6	18	57	121	228	304	97	30	6	2			664		
PM Peak	15:00	16:00	16:00	13:00	12:00	13:00	16:00	17:00	22:00	23:00	22:00				16:00		
Vol.	1	3	9	13	45	86	190	110	26	8	2				439		

TRAFFIC DATABANK LLC

716 SOUTH SIXTH AVE
MT VERNON,NY,10550

Site Code:
Station ID:
ALBANY POST RD N OF 1ST ST
PHILIPSTOWN,NY
Latitude: 0' 0.0000 Undefined

SB

Start Time	15	16:20	21:25	26:30	31:35	36:40	41:45	46:50	51:55	56:60	61:65	66:70	71:75	76:999	Total	Pace Speed	Number in Pace
07/30/20	0	0	1	0	0	3	6	9	7	2	0	1	0	0	29	44-53	16
01:00	0	0	0	0	1	1	2	7	11	3	0	0	0	0	25	46-55	18
02:00	0	0	0	0	0	0	1	8	5	4	0	0	0	0	18	46-55	13
03:00	0	0	0	0	0	0	2	16	15	4	0	0	0	0	37	46-55	31
04:00	0	0	0	0	0	0	7	33	49	19	2	0	0	0	110	46-55	82
05:00	0	0	0	0	3	25	54	107	110	27	4	0	0	0	330	46-55	217
06:00	0	0	0	4	40	80	182	249	76	8	0	0	0	0	639	41-50	431
07:00	0	4	5	6	42	161	210	173	50	3	0	0	1	0	655	41-50	383
08:00	0	0	1	0	41	114	205	113	17	7	1	1	0	0	500	36-45	319
09:00	0	0	1	7	28	52	140	73	20	0	0	0	0	0	321	41-50	213
10:00	0	1	2	2	50	52	128	72	10	0	0	0	0	0	317	41-50	200
11:00	0	0	0	10	31	53	105	69	16	3	0	0	0	0	287	41-50	174
12 PM	3	2	3	10	31	71	142	83	14	0	0	0	0	0	359	41-50	225
13:00	0	1	4	6	22	90	142	72	13	2	1	0	0	0	353	36-45	232
14:00	0	1	0	3	14	66	151	105	15	3	1	0	0	0	359	41-50	256
15:00	0	2	5	3	33	122	121	66	12	2	0	0	0	0	366	36-45	243
16:00	0	5	7	4	23	100	190	81	12	0	0	0	0	0	422	36-45	290
17:00	0	1	1	0	4	91	161	93	14	0	0	0	0	0	365	41-50	254
18:00	0	0	2	1	15	54	113	71	12	3	0	1	0	0	272	41-50	184
19:00	0	2	2	3	4	30	81	62	12	1	0	1	0	0	198	41-50	143
20:00	0	0	3	0	2	26	71	52	17	1	0	0	0	0	172	41-50	123
21:00	0	0	0	0	0	19	59	36	22	1	0	0	0	0	137	41-50	95
22:00	0	0	1	2	1	7	32	39	29	7	0	0	0	0	118	41-50	71
23:00	0	0	0	0	0	2	11	20	16	2	1	0	0	0	52	46-55	36
Total	3	19	38	61	385	1219	2316	1709	574	102	10	4	1	0	6441		
Percent	0.0%	0.3%	0.6%	0.9%	6.0%	18.9%	36.0%	26.5%	8.9%	1.6%	0.2%	0.1%	0.0%	0.0%			
AM Peak		07:00	07:00	11:00	10:00	07:00	07:00	06:00	05:00	05:00	05:00	00:00	07:00		07:00		
Vol.		4	5	10	50	161	210	249	110	27	4	1	1		655		
PM Peak	12:00	16:00	16:00	12:00	15:00	15:00	16:00	14:00	22:00	22:00	13:00	18:00			16:00		
Vol.	3	5	7	10	33	122	190	105	29	7	1	1		422			

TRAFFIC DATABANK LLC

716 SOUTH SIXTH AVE
MT VERNON,NY,10550

Site Code:
Station ID:
ALBANY POST RD N OF 1ST ST
PHILIPSTOWN,NY
Latitude: 0' 0.0000 Undefined

SB

Start Time	15	16	20	21	25	26	30	31	35	36	40	41	45	46	50	51	55	56	60	61	65	66	70	71	75	76	999	Total	Pace Speed	Number in Pace
07/31/20	0	0	0	0	0	0	0	0	0	2	4	10	10	10	10	0	0	0	0	0	0	0	0	0	0	0	0	26	46-55	20
01:00	0	0	0	0	0	0	0	0	3	6	16	4	1	0	0	1	0	0	0	0	0	0	0	1	0	0	31	41-50	22	
02:00	0	0	0	0	0	0	0	0	0	3	6	11	4	0	0	0	0	0	0	0	0	0	0	0	0	0	24	46-55	17	
03:00	0	0	0	0	2	1	0	1	17	22	6	1	0	0	0	0	0	0	0	0	0	0	0	0	0	0	50	46-55	39	
04:00	0	0	0	0	0	0	3	5	24	58	10	5	0	0	0	0	0	0	0	0	0	0	0	0	0	0	105	46-55	82	
05:00	0	0	0	0	1	0	10	58	126	84	24	1	0	0	0	0	0	0	0	0	0	0	0	0	0	0	304	46-55	210	
06:00	0	1	0	3	15	93	203	189	59	13	0	1	0	0	0	0	0	0	0	0	0	0	0	0	0	0	577	41-50	392	
07:00	0	0	3	16	37	143	263	139	25	4	0	0	0	0	0	0	0	0	0	0	0	0	0	0	0	0	630	36-45	406	
08:00	0	0	1	8	29	130	179	80	17	2	0	0	0	0	0	0	0	0	0	0	0	0	0	0	0	0	446	36-45	309	
09:00	0	2	7	17	37	104	143	42	6	0	0	0	0	0	0	0	0	0	0	0	0	0	0	0	0	0	358	36-45	247	
10:00	0	0	3	9	30	72	135	71	6	0	0	0	0	0	0	0	0	0	0	0	0	0	0	0	0	0	326	36-45	207	
11:00	1	5	6	7	31	55	127	86	17	3	0	0	0	0	0	0	0	0	0	0	0	0	0	0	0	0	338	41-50	213	
12 PM	0	4	7	7	38	118	142	62	11	1	0	0	0	0	0	0	0	0	0	0	0	0	0	0	0	0	390	36-45	260	
13:00	0	0	2	2	14	52	176	93	16	1	0	0	0	0	0	0	0	0	0	0	0	0	0	0	0	0	356	41-50	269	
14:00	0	4	4	14	12	54	162	92	16	1	1	0	0	0	0	0	0	0	0	0	0	0	0	0	0	0	360	41-50	254	
15:00	0	1	10	16	30	80	154	82	15	4	0	0	0	0	0	0	0	0	0	0	0	0	0	0	0	0	392	41-50	236	
16:00	0	1	8	9	25	134	189	80	17	2	1	0	0	0	0	0	0	0	0	0	0	0	0	0	0	0	466	36-45	323	
17:00	0	5	4	8	26	73	166	127	15	0	0	0	0	0	0	0	0	0	0	0	0	0	0	0	0	0	424	41-50	293	
18:00	0	3	0	5	12	49	129	120	24	5	0	0	0	0	0	0	0	0	0	0	0	0	0	0	0	0	347	41-50	249	
19:00	0	0	3	1	10	28	76	77	29	6	1	1	0	0	0	0	0	0	0	0	0	0	0	0	0	0	232	41-50	153	
20:00	0	3	1	0	5	24	90	50	14	1	0	0	0	0	0	0	0	0	0	0	0	0	0	0	0	0	188	41-50	140	
21:00	0	0	5	2	3	8	64	57	25	3	0	0	0	0	0	0	0	0	0	0	0	0	0	0	0	0	167	41-50	121	
22:00	0	0	0	0	2	2	24	42	29	11	0	0	0	0	0	0	0	0	0	0	0	0	0	0	0	0	110	46-55	71	
23:00	0	0	0	0	0	1	25	31	20	4	0	0	0	0	0	0	0	0	0	0	0	0	0	0	0	0	81	41-50	56	
Total	1	29	64	127	357	1238	2524	1719	550	106	10	2	1	0	0	2	1	0	0	0	0	0	0	0	0	0	6728			
Percent	0.0%	0.4%	1.0%	1.9%	5.3%	18.4%	37.5%	25.5%	8.2%	1.6%	0.1%	0.0%	0.0%	0.0%	0.0%	0.0%	0.0%	0.0%	0.0%	0.0%	0.0%	0.0%	0.0%	0.0%	0.0%	0.0%				
AM Peak	11:00	11:00	09:00	09:00	07:00	07:00	07:00	06:00	05:00	05:00	04:00	06:00	01:00															07:00		
Vol.	1	5	7	17	37	143	263	189	84	24	5	1	1															630		
PM Peak		17:00	15:00	15:00	12:00	16:00	16:00	17:00	19:00	22:00	14:00	19:00																16:00		
Vol.		5	10	16	38	134	189	127	29	11	1	1																466		

TRAFFIC DATABANK LLC

716 SOUTH SIXTH AVE
MT VERNON,NY,10550

Site Code:
Station ID:
ALBANY POST RD N OF 1ST ST
PHILIPSTOWN,NY
Latitude: 0' 0.0000 Undefined

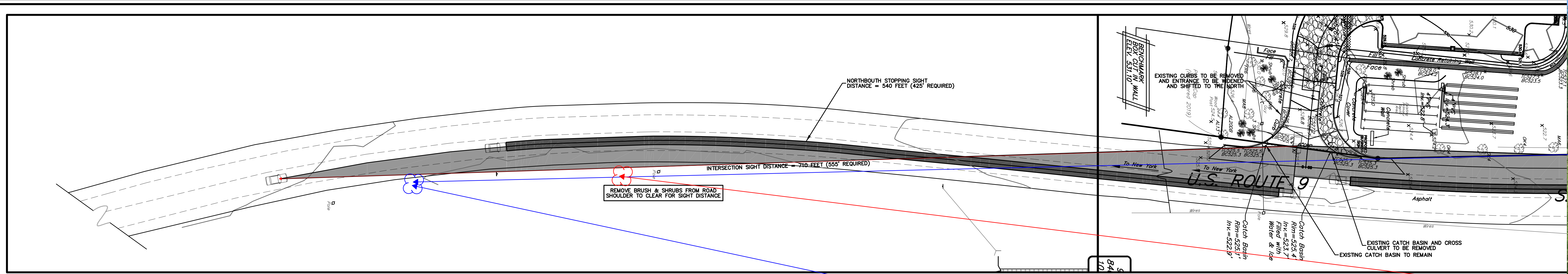
SB

Start Time	15	20	25	30	35	40	45	50	55	60	65	70	75	999	Total	Pace Speed	Number in Pace
08/01/20	0	0	0	0	0	0	10	10	10	5	0	0	0	0	35	41-50	20
01:00	0	0	0	0	2	6	5	9	8	3	0	0	0	0	33	46-55	17
02:00	0	0	0	0	0	0	2	2	6	1	1	0	0	0	12	46-55	8
03:00	0	0	0	0	0	0	3	11	8	4	0	0	0	0	26	46-55	19
04:00	0	0	0	0	0	0	9	10	20	10	4	1	0	0	54	46-55	30
05:00	0	0	0	0	0	0	18	45	37	10	3	1	1	0	115	46-55	82
06:00	0	0	0	0	1	22	39	95	66	22	2	1	0	0	248	46-55	161
07:00	0	1	0	0	8	7	53	93	65	16	2	0	0	0	245	46-55	158
08:00	0	0	1	1	1	9	62	119	27	3	1	0	0	0	224	41-50	181
09:00	0	0	2	1	6	30	93	97	21	7	2	0	0	0	259	41-50	190
10:00	0	2	4	3	12	17	111	115	24	1	1	0	1	0	291	41-50	226
11:00	0	0	5	6	5	58	133	79	14	0	0	0	0	0	300	41-50	212
12 PM	0	1	10	0	12	52	144	98	19	2	0	0	0	0	338	41-50	242
13:00	0	3	1	1	15	60	210	107	18	1	0	0	0	0	416	41-50	317
14:00	0	0	4	17	23	57	157	111	30	1	0	0	0	0	400	41-50	268
15:00	0	1	2	2	11	80	150	122	19	3	0	0	0	0	390	41-50	272
16:00	0	1	4	4	26	84	173	94	23	4	0	0	0	0	413	41-50	267
17:00	0	1	2	0	9	79	168	93	12	2	0	0	0	0	366	41-50	261
18:00	*	*	*	*	*	*	*	*	*	*	*	*	*	*	*	*	*
19:00	*	*	*	*	*	*	*	*	*	*	*	*	*	*	*	*	*
20:00	*	*	*	*	*	*	*	*	*	*	*	*	*	*	*	*	*
21:00	*	*	*	*	*	*	*	*	*	*	*	*	*	*	*	*	*
22:00	*	*	*	*	*	*	*	*	*	*	*	*	*	*	*	*	*
23:00	*	*	*	*	*	*	*	*	*	*	*	*	*	*	*	*	*
Total	0	10	35	35	131	561	1540	1310	427	95	16	3	2	0	4165		
Percent	0.0%	0.2%	0.8%	0.8%	3.1%	13.5%	37.0%	31.5%	10.3%	2.3%	0.4%	0.1%	0.0%	0.0%			
AM Peak		10:00	11:00	11:00	10:00	11:00	11:00	08:00	06:00	06:00	04:00	04:00	05:00		11:00		
Vol.		2	5	6	12	58	133	119	66	22	4	1	1		300		
PM Peak		13:00	12:00	14:00	16:00	16:00	13:00	15:00	14:00	16:00					13:00		
Vol.		3	10	17	26	84	210	122	30	4					416		
Total	9	87	237	373	1402	4592	9983	7511	2350	445	58	13	4	0	27064		
Percent	0.0%	0.3%	0.9%	1.4%	5.2%	17.0%	36.9%	27.8%	8.7%	1.6%	0.2%	0.0%	0.0%	0.0%			

15th Percentile : 37 MPH
 50th Percentile : 43 MPH
85th Percentile : 49 MPH
 95th Percentile : 53 MPH

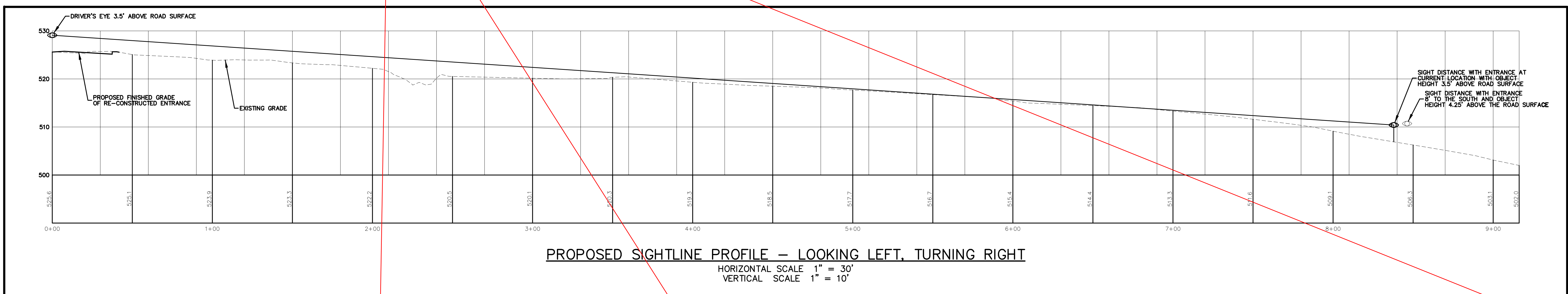
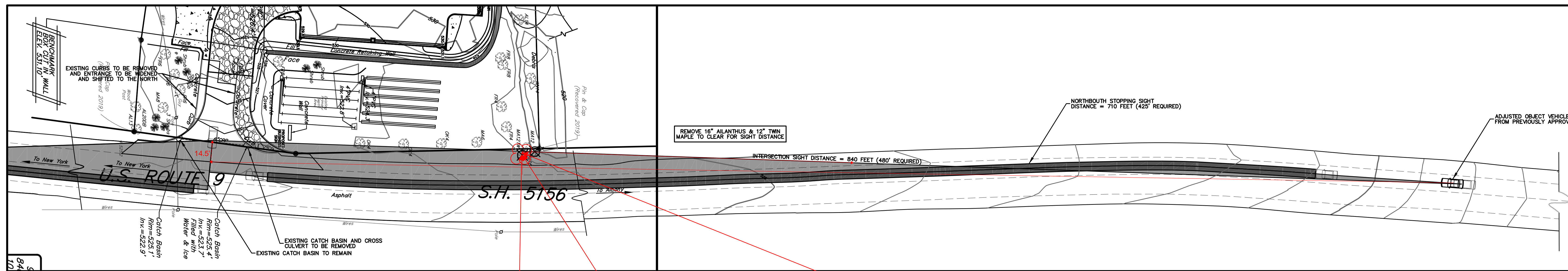
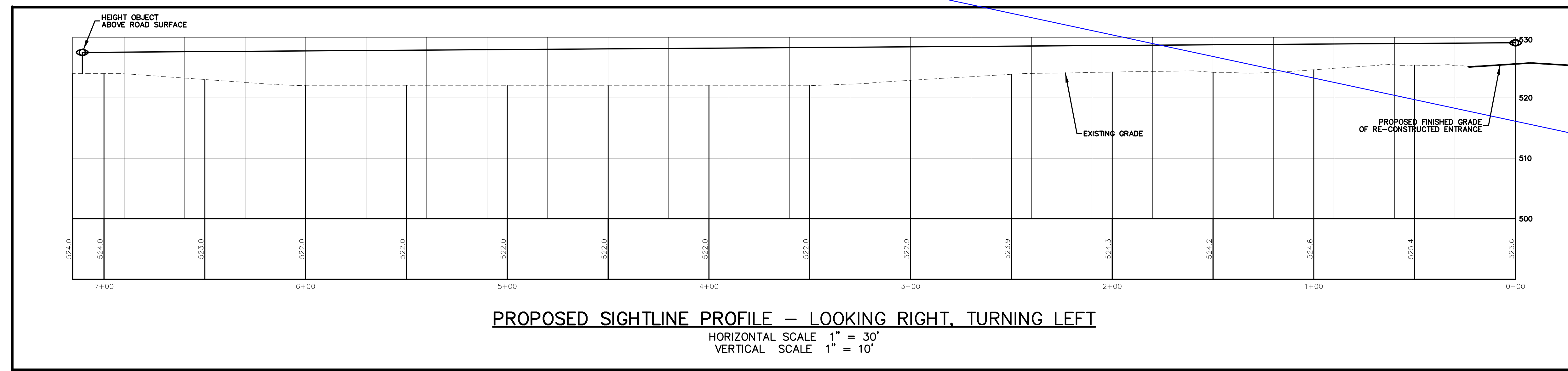
Stats
 10 MPH Pace Speed : 41-50 MPH
 Number in Pace : 17494
 Percent in Pace : 64.6%
 Number of Vehicles > 55 MPH : 520
 Percent of Vehicles > 55 MPH : 1.9%
 Mean Speed(Average) : 44 MPH

Vegetation Removal Plan

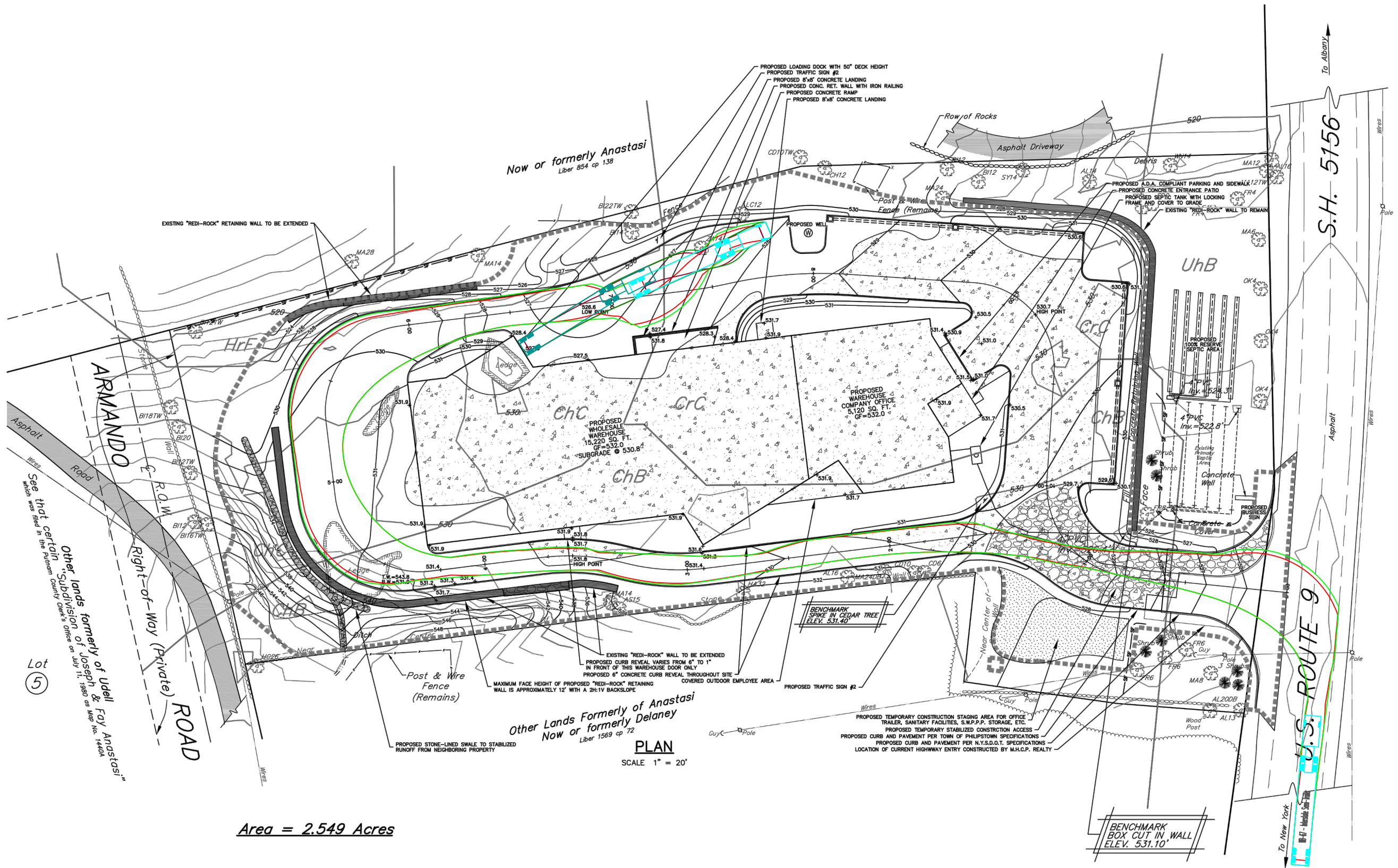


SPEED LIMIT
50

9 8404 TO 9 8404
1079 1077



Truck Maneuvering Plans



Area = 2.549 Acres

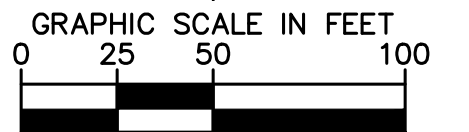
CRS WAREHOUSE
2761 ROUTE 9, COLD SPRING
TOWN OF PHILIPSTOWN, NY 10516

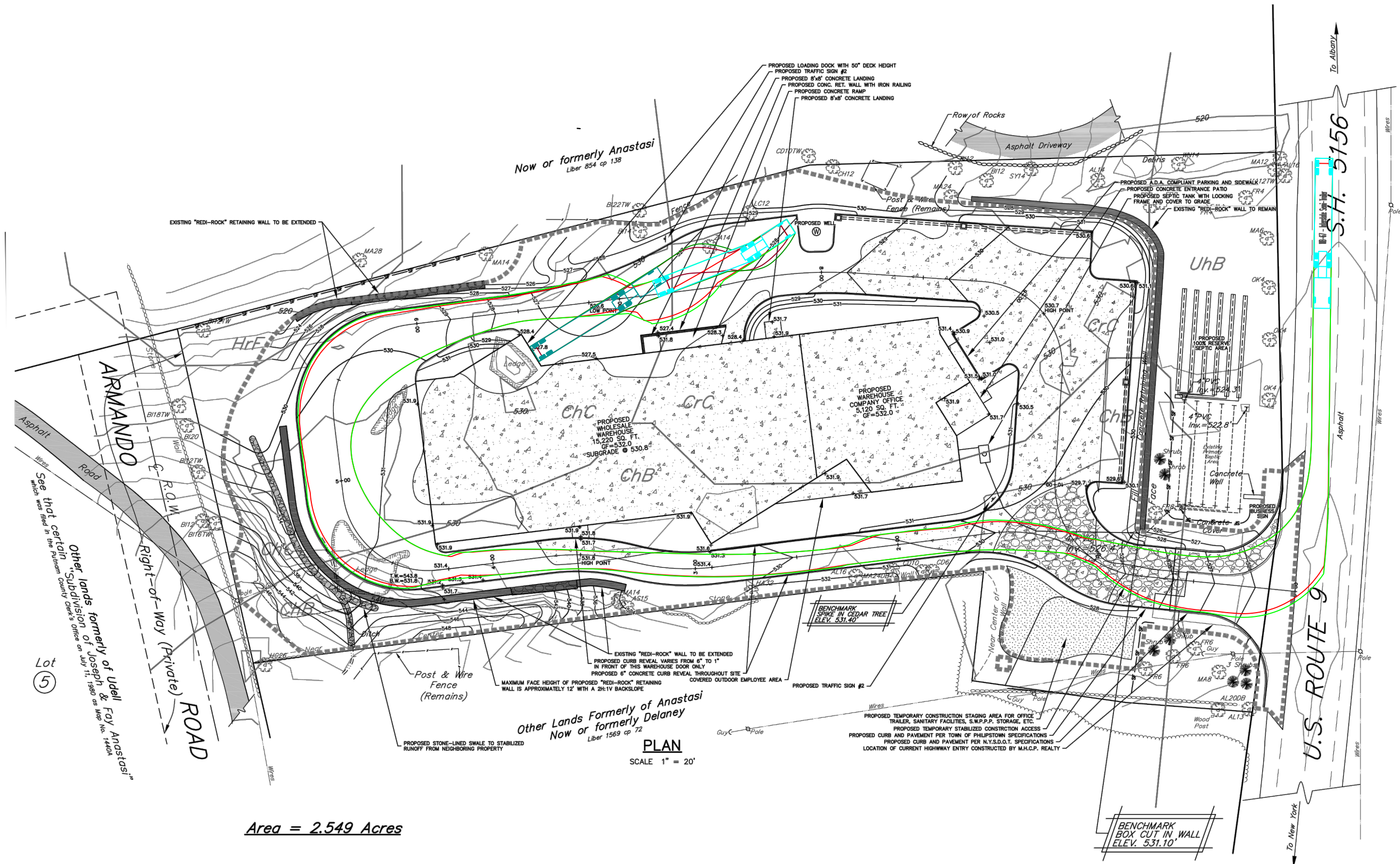
LEFT TURN IN

KHA PROJECT:	112350000
DATE:	07-27-2020
DESIGNED BY:	VMP
DRAWN BY:	VMP
CHECKED BY:	TJC



© 2020 KIMLEY-HORN OF NEW YORK PC
1 NORTH LEXINGTON AVENUE, SUITE 1575
WHITE PLAINS, NY 10601
PHONE: 914-368-9200
WWW.KIMLEY-HORN.COM





Saved Tuesday, August 4, 2020 3:29:32 PM VERONICA PREZIOSO Plotted Tuesday, August 4, 2020 3:29:28 PM Precioso, Veronica

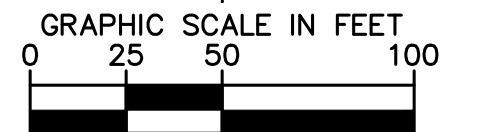
CRS WAREHOUSE
2761 ROUTE 9, COLD SPRING
TOWN OF PHILIPSTOWN, NY 10516

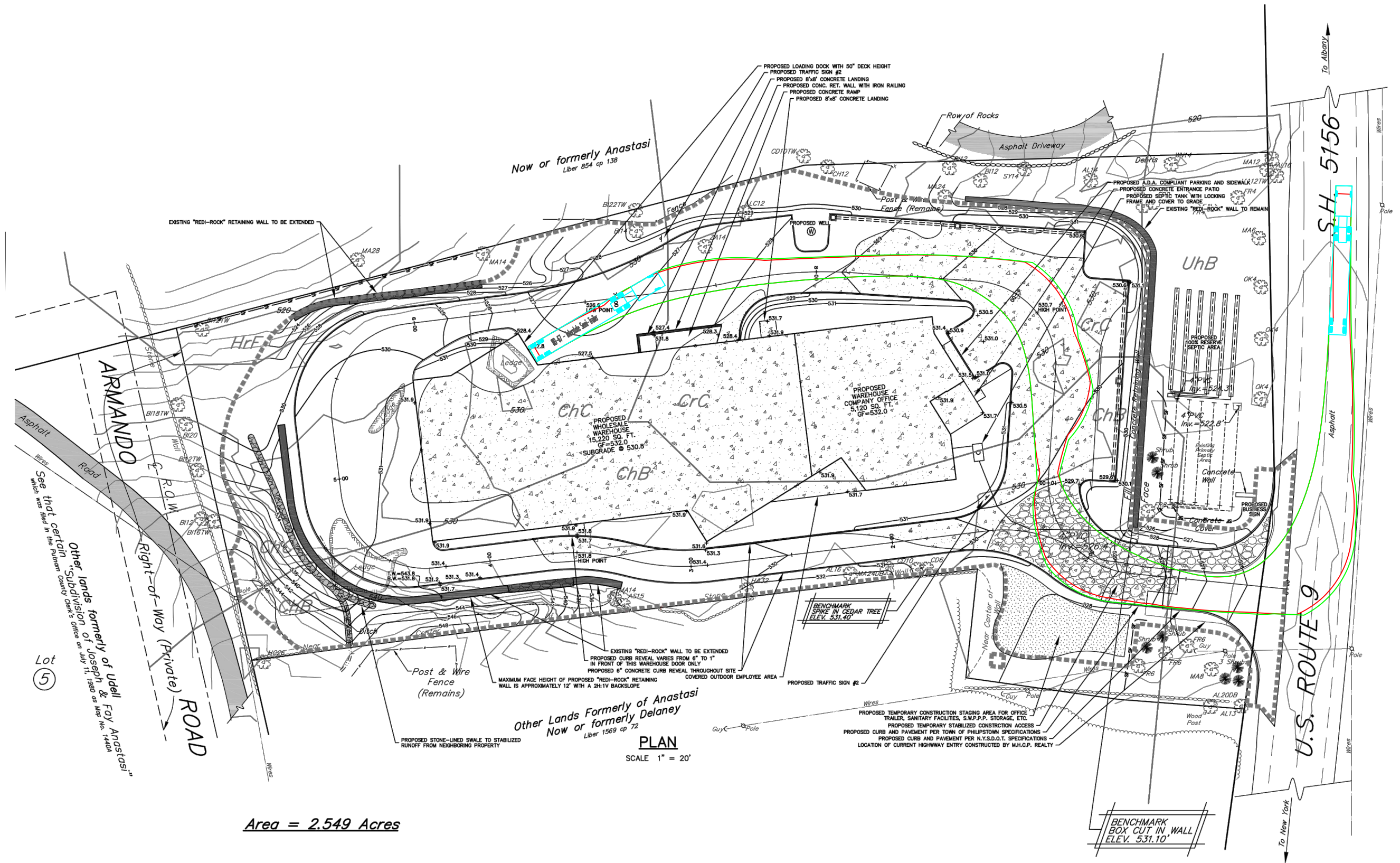
RIGHT TURN IN

KHA PROJECT:	112350000
DATE:	07-27-2020
DESIGNED BY:	VMP
DRAWN BY:	VMP
CHECKED BY:	TJC



© 2020 KIMLEY-HORN OF NEW YORK PC
1 NORTH LEXINGTON AVENUE, SUITE 1575
WHITE PLAINS, NY 10601
PHONE: 914-368-9200
WWW.KIMLEY-HORN.COM





Saved Tuesday, August 4, 2020 3:29:32 PM VERONICA PREZIOSO Plotted Tuesday, August 4, 2020 3:38:39 PM Precioso, Veronica

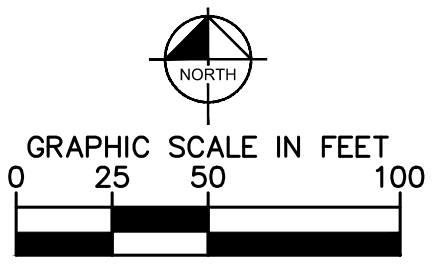
CRS WAREHOUSE
2761 ROUTE 9, COLD SPRING
TOWN OF PHILIPSTOWN, NY 10516

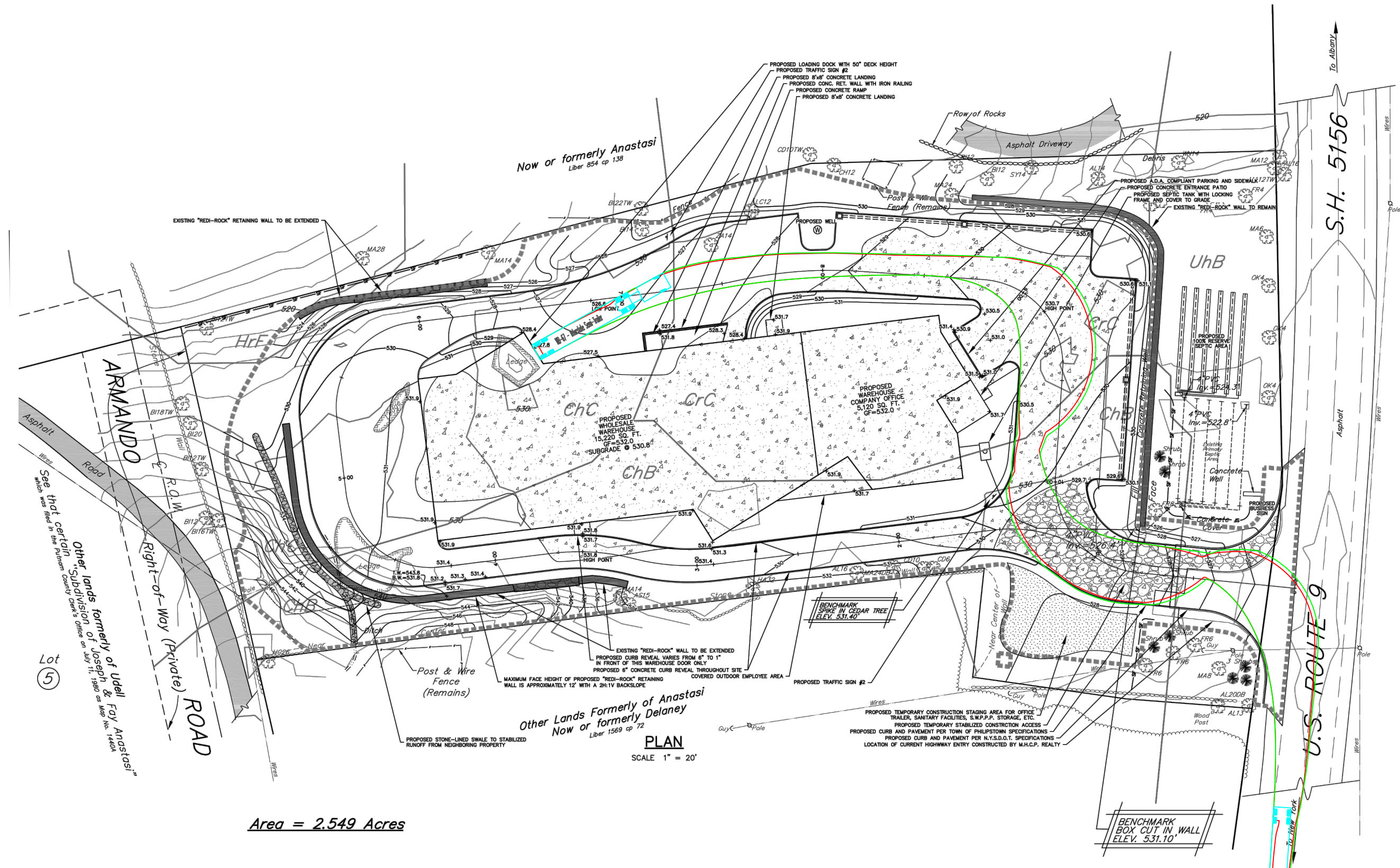
LEFT TURN OUT

KHA PROJECT:	112350000
DATE:	07-27-2020
DESIGNED BY:	VMP
DRAWN BY:	VMP
CHECKED BY:	TJC



© 2020 KIMLEY-HORN OF NEW YORK PC
1 NORTH LEXINGTON AVENUE, SUITE 1575
WHITE PLAINS, NY 10601
PHONE: 914-368-9200
WWW.KIMLEY-HORN.COM





Area = 2.549 Acres

PLAN
SCALE 1" = 20'

CRS WAREHOUSE
2761 ROUTE 9, COLD SPRING
TOWN OF PHILIPSTOWN, NY 10516

RIGHT TURN OUT

KHA PROJECT:	112350000
DATE:	07-27-2020
DESIGNED BY:	VMP
DRAWN BY:	VMP
CHECKED BY:	TJC

Kimley»Horn
of New York, P.C.
© 2020 KIMLEY-HORN OF NEW YORK PC
1 NORTH LEXINGTON AVENUE, SUITE 1575
WHITE PLAINS, NY 10601
PHONE: 914-368-9200
WWW.KIMLEY-HORN.COM

